

MLS Area GTE

Residential Statistics



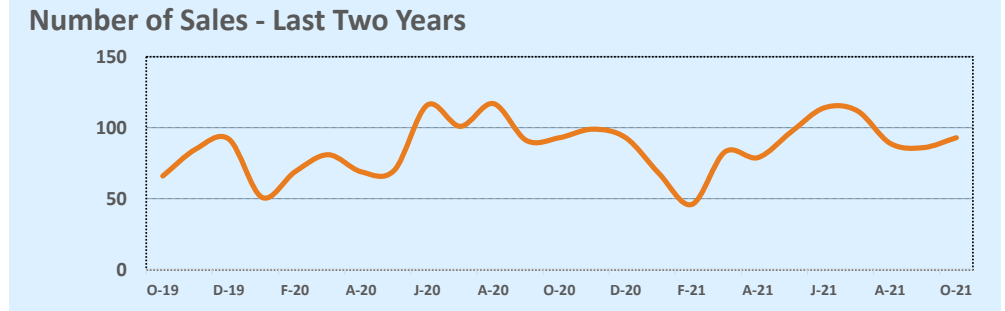
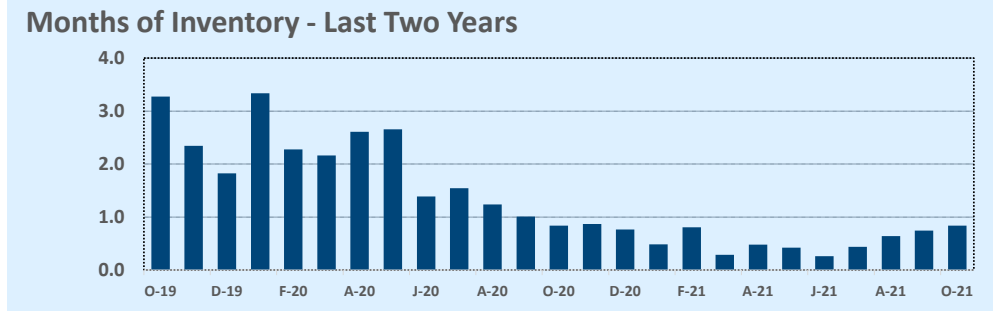
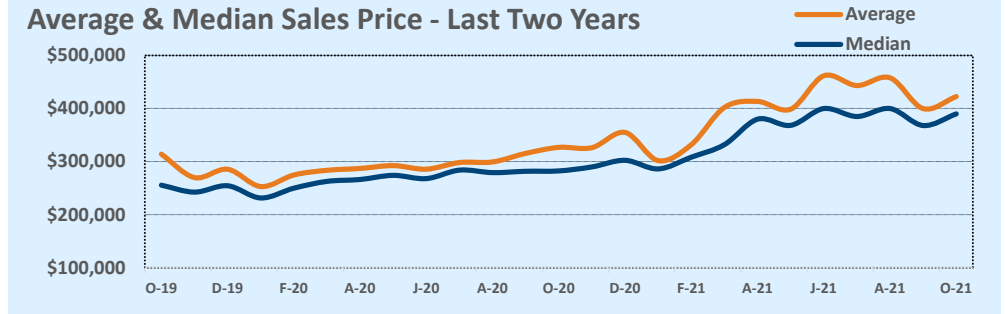
October 2021

Listings	This Month			Year-to-Date		
	Oct 2021	Oct 2020	Change	2021	2020	Change
Single Family Sales	85	88	-3.4%	814	819	-0.6%
Condo/TH Sales	8	5	+60.0%	53	39	+35.9%
Total Sales	93	93	--	867	858	+1.0%
New Homes Only	5	14	-64.3%	60	157	-61.8%
Resale Only	88	79	+11.4%	807	701	+15.1%
Sales Volume	\$39,300,616	\$30,396,753	+29.3%	\$357,238,453	\$252,550,257	+41.5%
New Listings	108	104	+3.8%	1,040	994	+4.6%
Pending	--	--	--	--	--	--
Withdrawn	1	1	--	6	42	-85.7%
Expired	1	1	--	6	42	-85.7%
Months of Inventory	0.8	0.8	--	N/A	N/A	--

Price Range	This Month			Year-to-Date		
	New	Sales	DOM	New	Sales	DOM
\$149,999 or under	--	--	--	1	2	1
\$150,000- \$199,999	--	--	--	4	6	23
\$200,000- \$249,999	--	--	--	26	34	18
\$250,000- \$299,999	5	8	38	173	127	21
\$300,000- \$349,999	10	13	7	196	168	11
\$350,000- \$399,999	36	34	9	261	187	10
\$400,000- \$449,999	25	17	11	125	146	9
\$450,000- \$499,999	10	8	10	87	59	12
\$500,000- \$549,999	5	2	16	37	37	9
\$550,000- \$599,999	5	3	9	33	24	12
\$600,000- \$699,999	3	3	34	40	36	22
\$700,000- \$799,999	--	1	7	22	16	11
\$800,000- \$899,999	1	3	31	11	8	49
\$900,000- \$999,999	--	--	--	2	3	39
\$1M - \$1.99M	7	1	11	19	11	31
\$2M - \$2.99M	1	--	--	3	2	27
\$3M+	--	--	--	--	1	279
Totals	108	93	13	1,040	867	14

Average	This Month			Year-to-Date		
	Oct 2021	Oct 2020	Change	2021	2020	Change
List Price	\$413,543	\$330,242	+25.2%	\$393,593	\$298,006	+32.1%
List Price/SqFt	\$212	\$160	+32.3%	\$201	\$152	+32.2%
Sold Price	\$422,587	\$326,847	+29.3%	\$412,040	\$294,348	+40.0%
Sold Price/SqFt	\$217	\$159	+36.6%	\$211	\$150	+40.1%
Sold Price / Orig LP	102.7%	99.5%	+3.2%	105.5%	99.0%	+6.6%
Days on Market	13	45	-70.4%	14	56	-75.1%

Median	This Month			Year-to-Date		
	Oct 2021	Oct 2020	Change	2021	2020	Change
List Price	\$375,000	\$284,821	+31.7%	\$350,000	\$273,990	+27.7%
List Price/SqFt	\$207	\$148	+40.0%	\$187	\$144	+29.7%
Sold Price	\$389,955	\$282,470	+38.1%	\$370,000	\$270,000	+37.0%
Sold Price/SqFt	\$209	\$145	+44.5%	\$198	\$143	+37.8%
Sold Price / Orig LP	101.3%	100.0%	+1.3%	101.9%	99.4%	+2.5%
Days on Market	6	16	-62.5%	5	29	-82.8%



Based on information from the Austin Board of REALTORS® (alternatively, from ACTRIS). Neither the Board nor ACTRIS guarantees or is in any way responsible for its accuracy. The Austin Board of REALTORS®, ACTRIS and their affiliates provide the MLS and all content therein "AS IS" and without any warranty, express or implied. Data maintained by the Board or ACTRIS may not reflect all real estate activity in the market.